

# THE POWER OF LOVE

INTRO/CHORUS

5

PRE-VERSE

9

VERSE

13

16

19

22

25

29

33

CHORUS

DS

Detailed description: This is a bass line for the song 'The Power of Love'. It is written in 4/4 time and begins with a treble clef. The piece is divided into several sections: an Intro/Chorus (measures 1-4), a Pre-Verse (measures 5-8), a Verse (measures 9-21), and a Chorus (measures 33-36). The key signature has one flat (B-flat). The notation includes various rhythmic patterns such as eighth and sixteenth notes, rests, and dynamic markings like accents and slurs. There are also first and second endings marked with '1.' and '2.'. The piece concludes with a double bar line and the marking 'DS'.

36



40



44



49



54

PRE SOLO

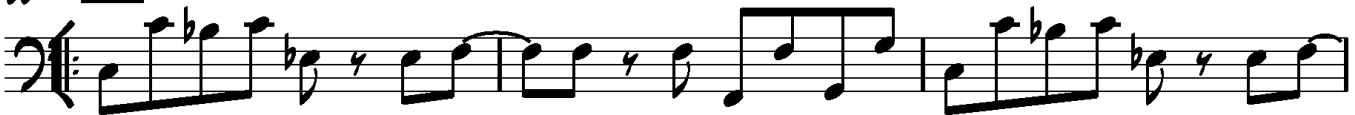


57



60

SOLO



63

4x



66

4x



68

